

How to configure caller recognition and screen-pop for:

## ANVA

Contact replication method: None

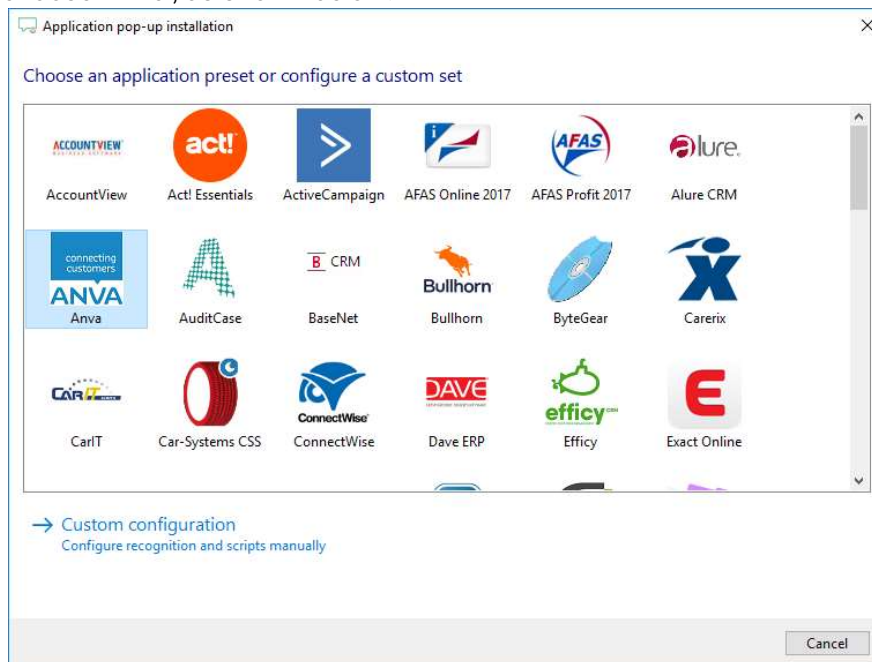
Screen pop method: URL

### Notes

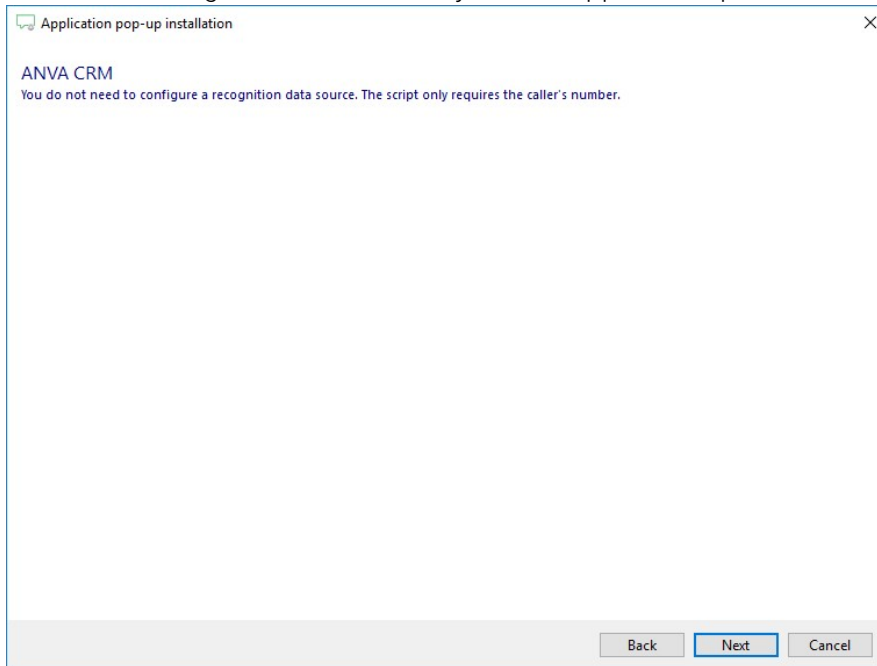
For outbound dialing, simply select a phone number and press <Pause> (default hotkey) to dial.

### Configuration steps

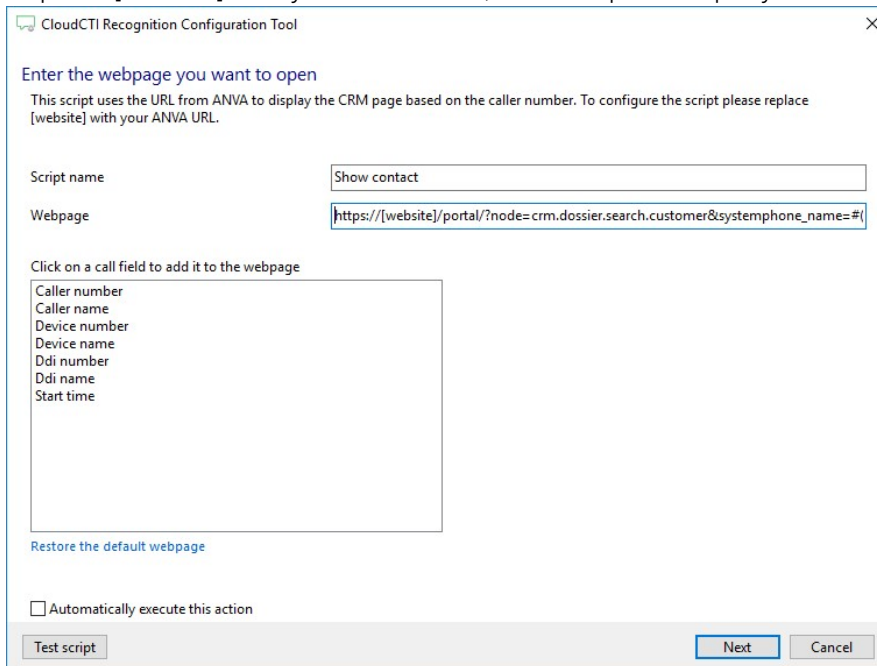
- 1) Start by clicking 'add recognition' in the [Recognition Configuration Tool](#) (this is done automatically if no configuration has yet been configured). From the list of applications, choose 'Anva', as shown below.



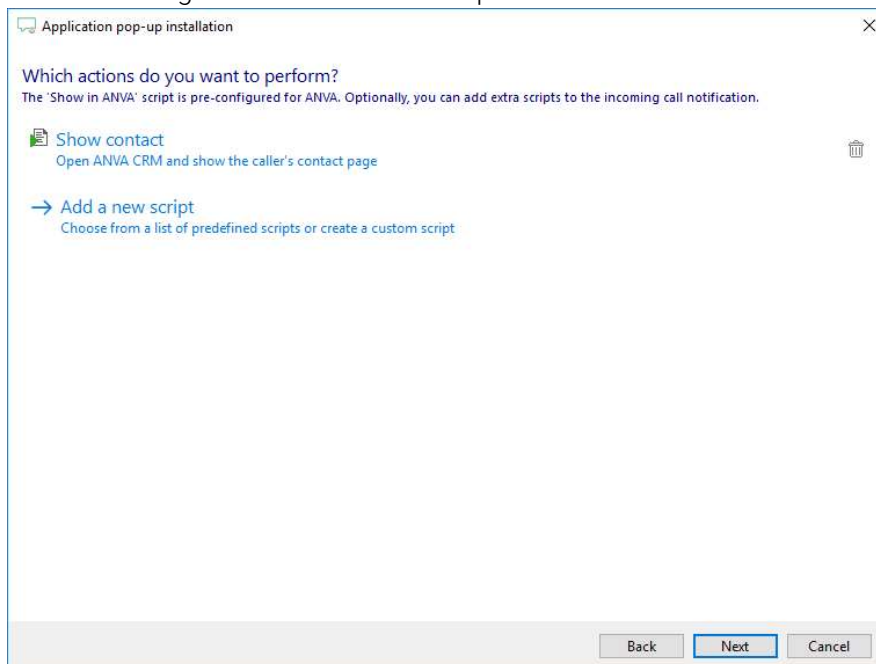
2) No further configuration is necessary for this application, press 'Next' to continue.



3) Replace [website] with your ANVA URL, for example 'companyname.anvaelements.nl'.



4) You can change or add additional scripts.



5) Check the configuration summary and click finish to add the recognition from Anva.

